



INVESTICE DO ROZVOJE VZDĚLÁVÁNÍ

STUDIJNÍ POBYT

Místo: Bournemouth, Velká Británie

Jméno: Vladimíra Martínková

Journey

I flew from Prague to London Heathrow and then I went by couch to Bornemouth coach station and in the end I was picked up by my host family from the station, which was very kind of them because it is not very easy to find the way to their house for the first time and the taxi would be quite expensive.

On my journey home I used the same means of transport.



Family

Debbie and Robbie Ayles

She works in construction management and he for the Water Board.

They are interested in sport especially in football. Robbie is a big fan of Manchester United. In their house lives also Debbie's daughter Saroa and tomcat Jerry. Debbie takes care for house and Robbie is an excellent cook. Ayles are very friendly and helpful.

The house is situated in East Howe, which is a part of Bournemouth. Every day I commuted to College by bus 5b.





Veronika Nicolas Jose Anna Angela

School



I attended Maxima Intensive Course in **Richard Language College** which involves 20 lessons a week.

We had to write a placement test first day and we were divided into groups and started our lessons on the second day.

There were 5 students in my group in the first week and 4 in the second.

My schoolmates:

Anna from Poland, she was only one week in my group, se lives in Warsaw and she is a human resources officer

Nicolas from France, he is a professor at university

Jose from Spain, he is an air traffic controller

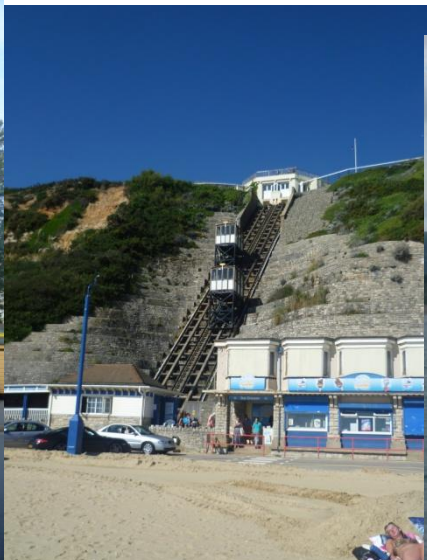
Veronika from Prague, she is a human resources officer

Our teacher **Angela** who was an young but very experienced teacher.

What we could see and visit

We usually went for short trips in and around **Bournemouth** on afternoons and for longer trips on weekends.

In Bournemouth we used yellow buses or ferry, we hired a bike and we travelled with a travel agency once. We even flew with the balloon which is called **Bournemouth eye**



One-day trips

First Sunday we hired bikes and we went by ferry to Jurassic Coast and we visited two interesting places

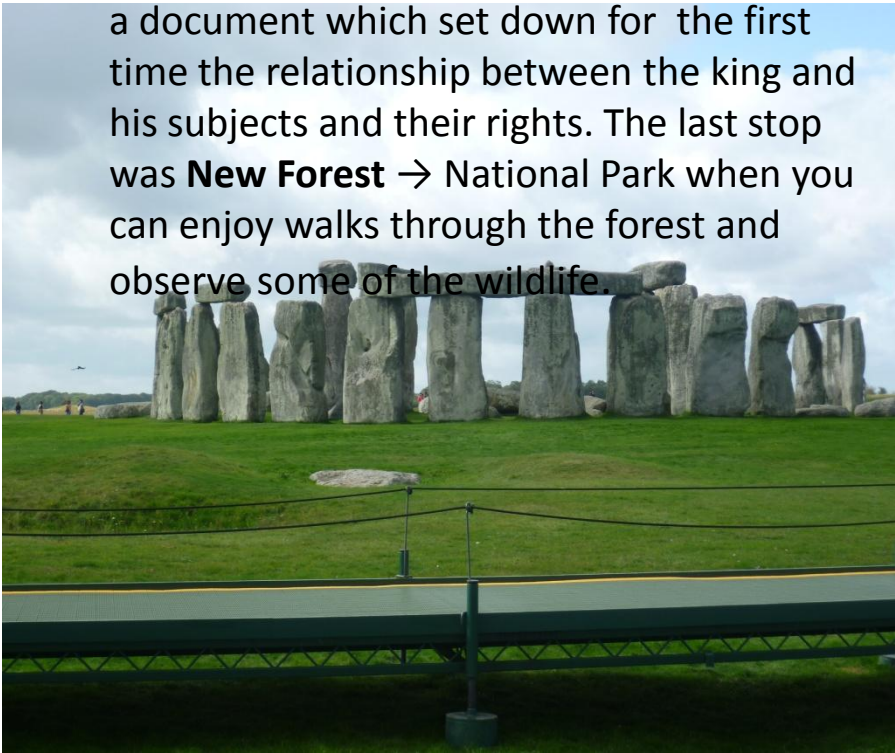
Old Harry Rocks → the starting point of Jurassic Coast, England's only natural UNESCO World Heritage Site

Corfe Castle → a village dominated by ruins of an old castle that gives it its name.



Second weekend

The second one-day trip was provided by Discover Dorset Tour a locally owned tourism company. We went to **Stonehenge** → an unique stone circle and our next stop was **Salisbury** → a historic city and market town with the Salisbury Cathedral which is said to be the tallest and most beautiful church building in Britain. The Chapel House is home to one of four surviving original Magna Carta a document which set down for the first time the relationship between the king and his subjects and their rights. The last stop was **New Forest** → National Park when you can enjoy walks through the forest and observe some of the wildlife.

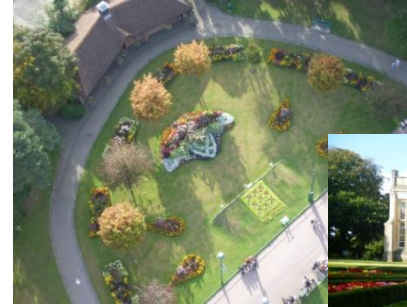


The second Sunday we visited the **Brownsea Island** which is home to red squirrel and many birds. The place where the first scout camp took place and where you can walk, relax and take timeout. We went by Yellow bus to Pool, by ferry to Brownsea Island and by ferry to Sandbanks and finally we walked from Sandbanks to Bournemouth Pier.





Short Trips



Pool

Close neighbor, just five miles west, by train 10minutes, by bus 30minutes to go

Pool Museum

You can learn much about the rich history of the port town Pool in four floors. From the Iron Age Pool till today. You can admire a collection of Pool Pottery, a replica of hide where you can view the birds of Pool Harbor etc.

Christchurch

Its location on rivers Avon and Stour and its own natural harbor makes it the perfect destination to relax. We can enjoy the beautiful coast from Hurn in the west to Highcliff in the east, you must visit the Priority Church, Christchurch castle ruins, markets on Mondays and Highcliff castle.

Bournemouth eye

We could participate on a flight by balloon called Bournemouth eye and admire the town, its parks, beaches, cliffs and the sea under us.



Lulworth Cove → the horse-shoe shaped beach is the gateway to Jurassic coast

Durdle Door → is a limestone arch, clean beach, swimming, scuba diving, snorkeling, fishing

Man of War Bay → an excellent sheltered beach with access from the steps at Durdle Door

Stair Hole → an eroding natural monument

Lulworth castle → originally built as hunting lodge, in 17th century, a huge parkland, has been owned by family Weld for 350 years

Hengistbury Head → cliff → National Park



More photographs from Stonehenge Salisbury and from New Forest



Acknowledgment

My stay in Bournemouth was a big motivation and a great possibility for me to learn English, to meet new interesting people and to get to know much about the country where English is spoken as mother tongue.

Therefore I would like to say thank all people they made my stay in Great Britain possible.

